

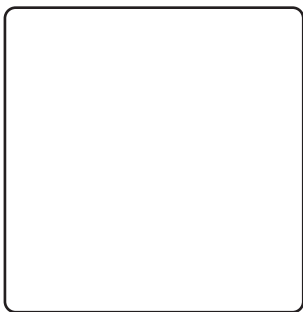
## **Sneeze Guard**

---

### **INSTALLATION GUIDE PN 739764**

Read through all of the instructions prior to beginning installation, and verify (using the packing list) that all parts have been received and are in good condition. Contact LSI Customer Service at **1-800-678-2001** for installation support.

### **PARTS**



WINDOW



ROD, QTY. 2

MACHINE SCREW, QTY. 2

NUT/WASHER, QTY. 2



BASE



SET SCREW  
CYLINDER, QTY. 4



ALLEN KEYS  
(FOR SMALL  
AND LARGE SET  
SCREWS)



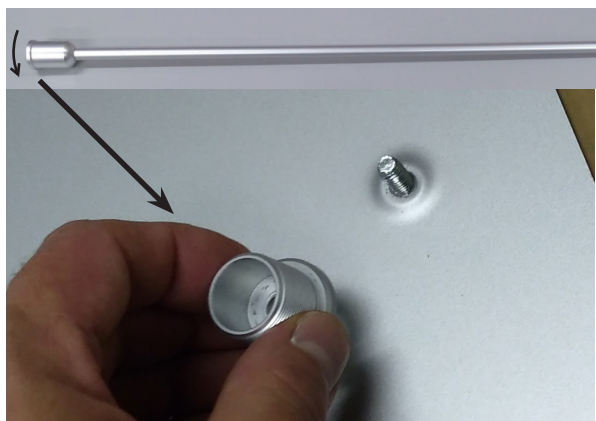
Step 1: (Below) Place Command strip on back of base in four corners. Don't remove tape backing.



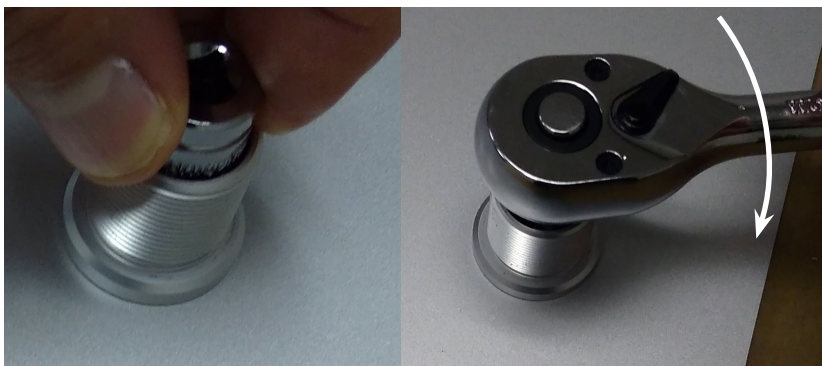
Step 2: (Below) Place two screws in holes underneath base.



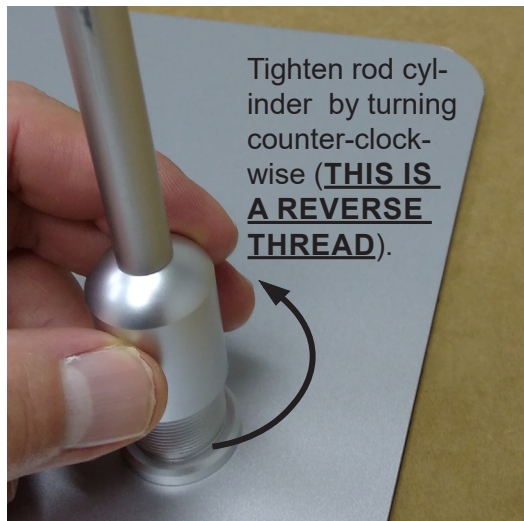
Step 3: (Two photos below) Turn lip on rod cylinder (this is a **REVERSE THREAD**) to remove threaded cylinder (can use washed latex glove for better grip). Place threaded cylinder on screw.



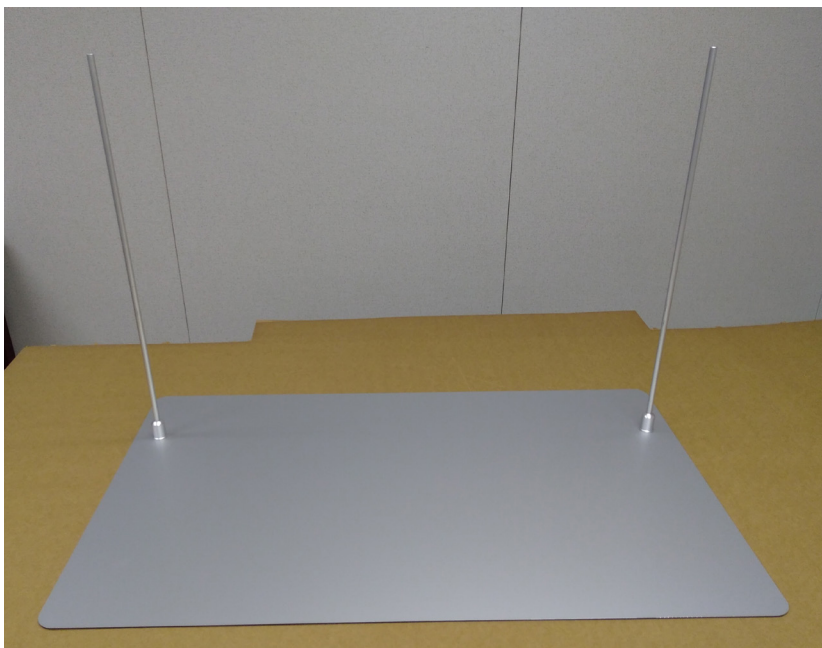
Step 4: (Below) Place nut into 3/8" socket, place socket into threaded cylinder and hand-tighten nut onto screw. Tighten socket as shown. **Make nuts very tight to prevent loosening when rod is attached later.**



Step 5: (Below) Assemble rod to threaded cylinder and tighten by turning **COUNTER-CLOCKWISE** (this is a LEFT-HANDED or **REVERSE THREAD**).



Step 6: (Below) Repeat steps to add second rod.

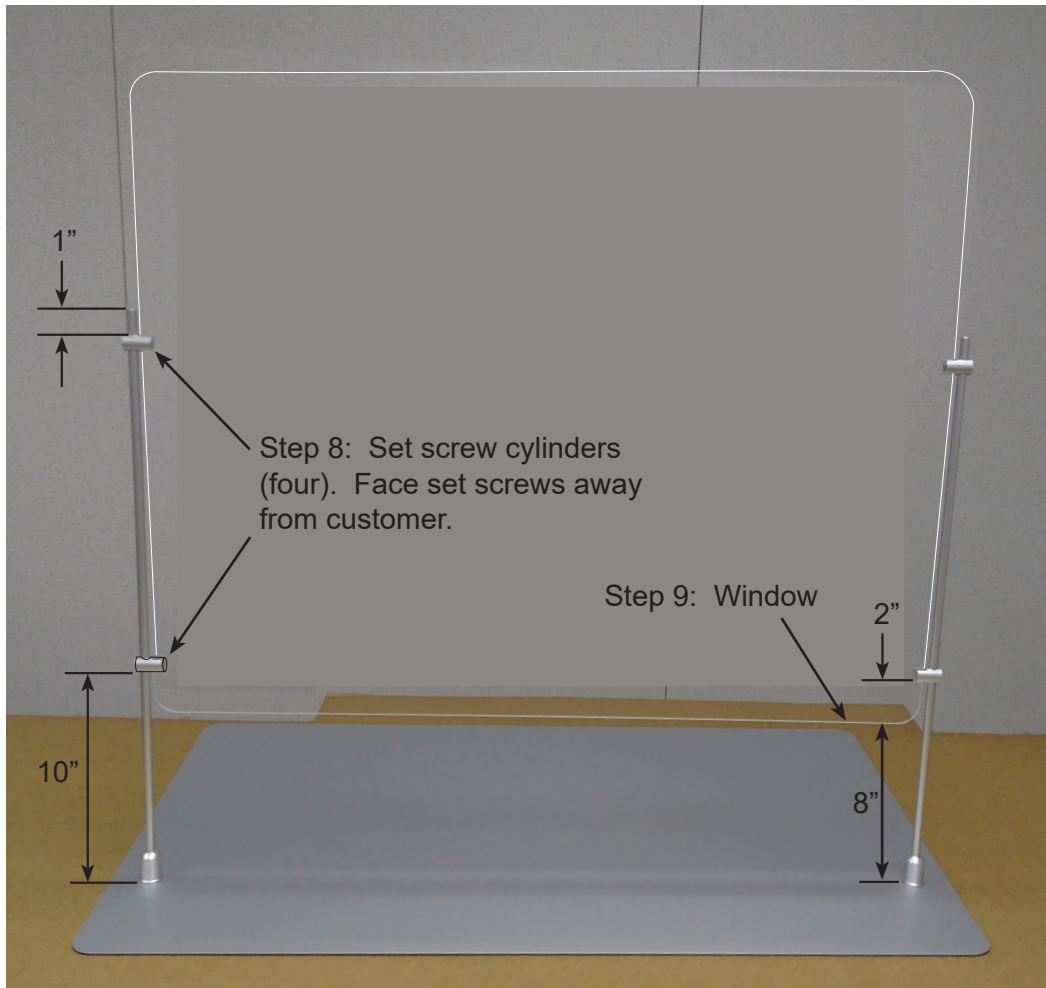


Step 7: (Right) Loosen set screws on cylinders enough to slide freely on window and rods.



Step 8: (Below) Place set screw cylinders on rods (with set screws on back, away from customer) as shown and tighten set screws.

Step 9: (Below) Place base on clean (covered) floor, lower window in place as shown below, tighten set screws (do not over-tighten).



Completed sneeze guard as seen by customer.

Step 10: Check measurements and tighten all screws. Do not tighten window set screws too much (to avoid cracking window).

Step 11: Clean counter top under base with soap/mild detergent and water. Rinse with water. Dry thoroughly. Position base. Remove backing from Command strips under base and press base down onto counter top.

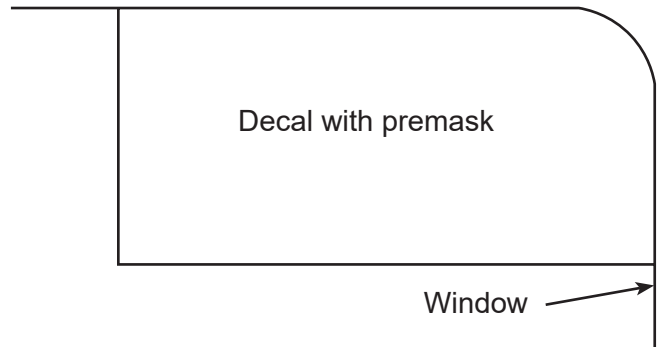
Step 12: Clean window with soap/mild detergent and water. Rinse with water. Dry with a clean cloth or paper towel. Wipe away any lint/fibers left by cloth/paper towel.



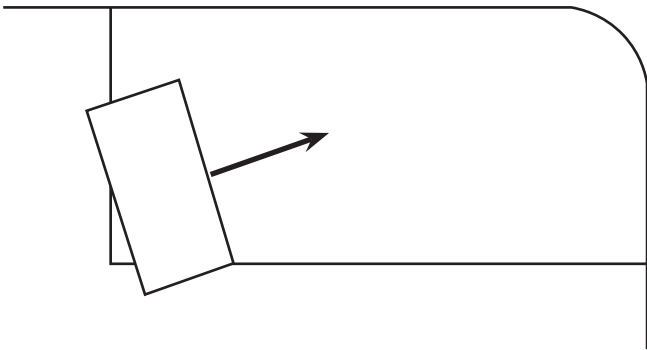
## Place Decal on Window (Optional)

Step 1: Clean area on window where logo decal will be placed with soap/mild detergent and water. Rinse with water. Dry with a clean cloth or paper towel. Wipe away any lint/fibers left by cloth/paper towel.

Step 2: (Below) Position logo decal by aligning with edges and curved corner of window.



Step 3: (Below) Smooth decal onto window by moving squeegee or other flat (non-scratching) object from corner to edges of premask/decal.



Step 4: (Below) Remove premask.

